



ROMANO GOLF VILLAS
LUXURY HOME

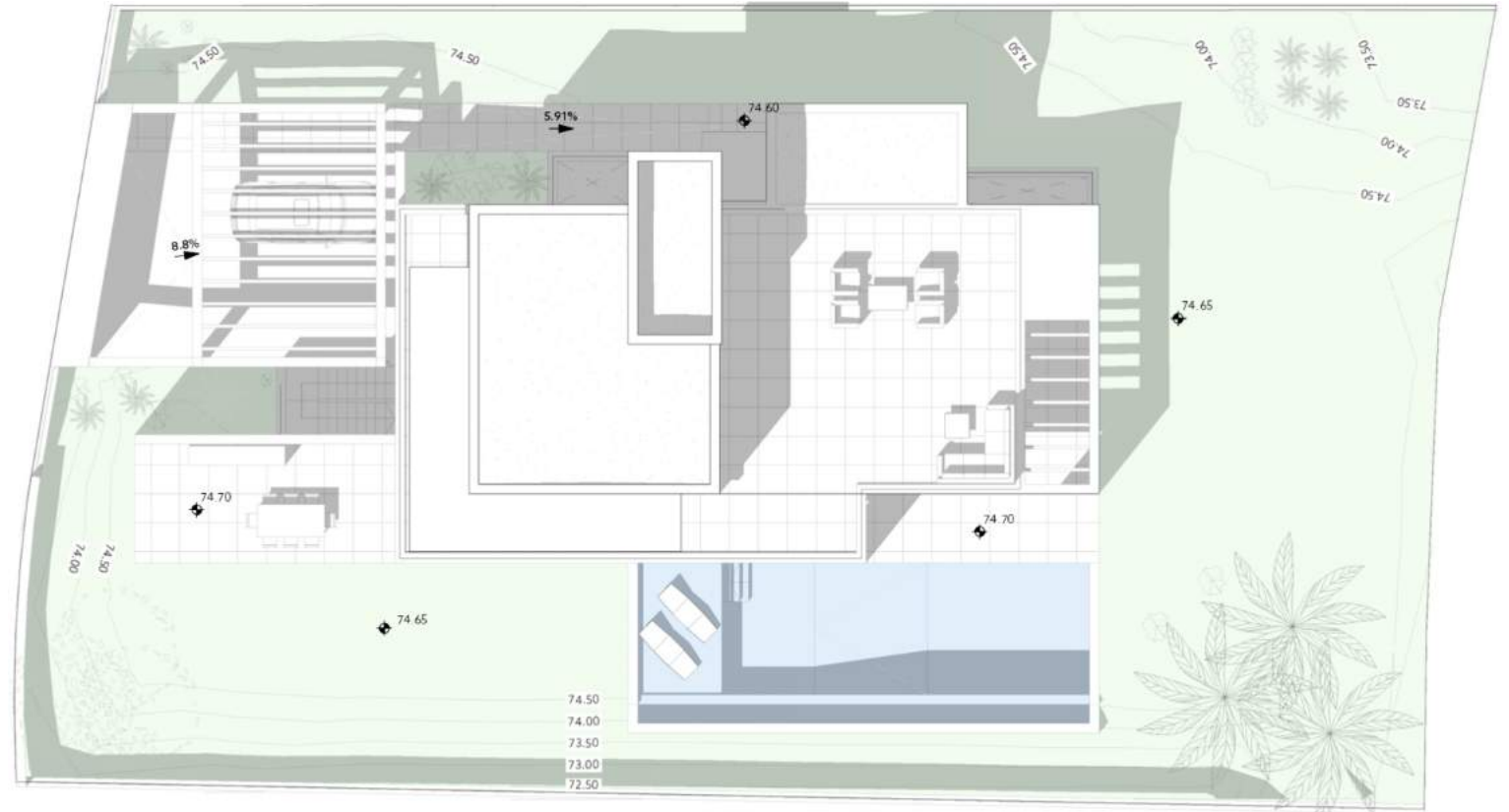
VILLA 2
GENERAL VIEW

METRES

Plot	_____	1078,88 m ²
Parking	_____	42,03 m ²
Pool	_____	57,61 m ²
Dwelling	_____	456,05 m ²

Architect
Serrano Font

Developer
Obras y Servicios Vialti



During the development of the project, the Management reserves the right to make the necessary changes, due to legal, administrative, technical, commercial or supply requirements, in distributions, dimensions and surfaces. In no case these changes will imply a modification of the stipulated purchase price. The furniture and any decorative elements that appear on the plans are simply a recreation for orientative and non-binding purposes, in no case are they included in the purchase price of the villa.



ROMANO GOLF VILLAS
LUXURY HOME

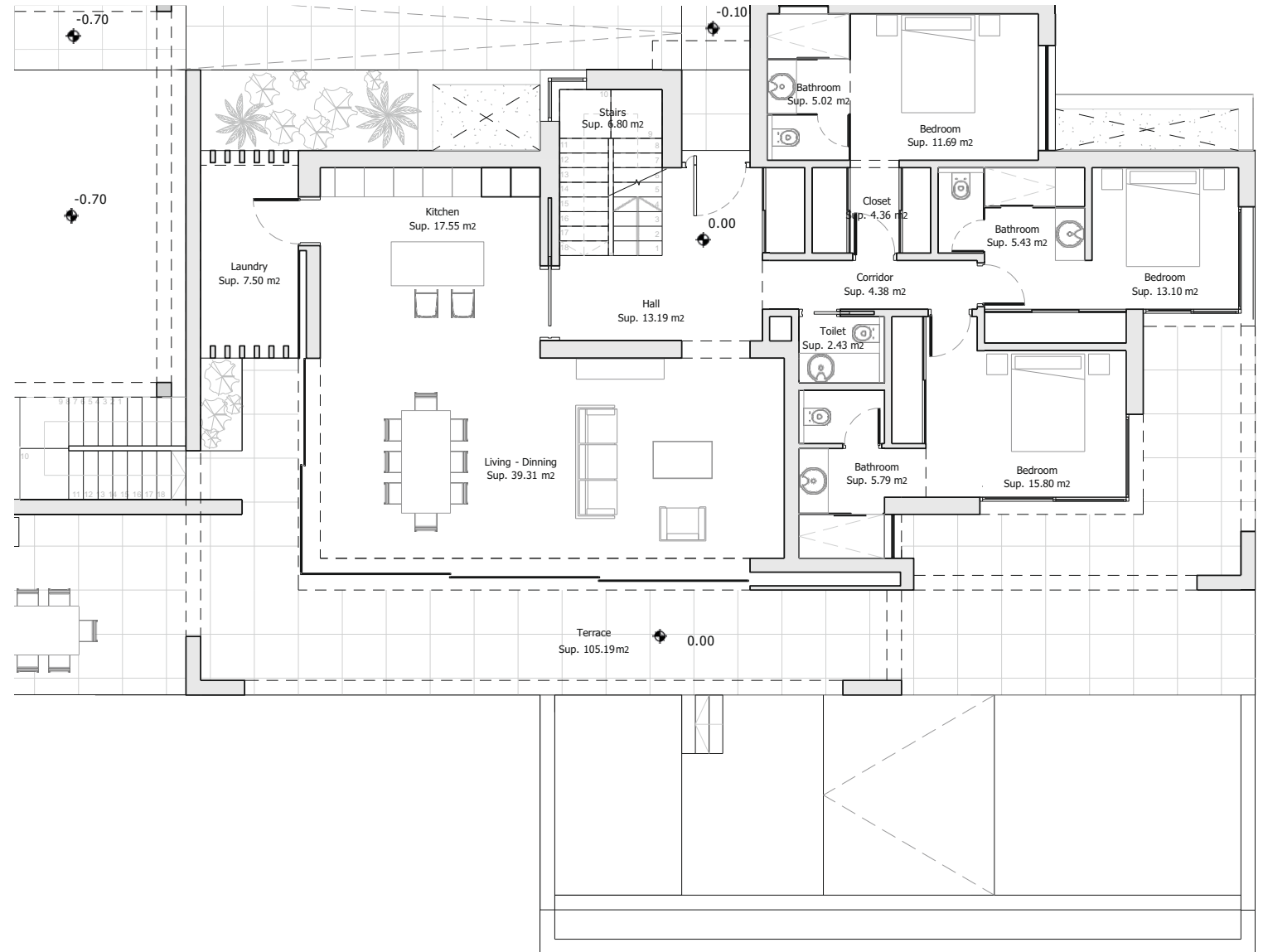
VILLA 2
GROUND FLOOR

METRES

Terrace	————	105,19 m ²
Useful	————	152,35 m ²
Built	————	177,31 m ²

Architect
Serrano Font

Developer
Obras y Servicios Vialti



During the development of the project, the Management reserves the right to make the necessary changes, due to legal, administrative, technical, commercial or supply requirements, in distributions, dimensions and surfaces. In no case these changes will imply a modification of the stipulated purchase price. The furniture and any decorative elements that appear on the plans are simply a recreation for orientative and non-binding purposes, in no case are they included in the purchase price of the villa.



ROMANO GOLF VILLAS
LUXURY HOME

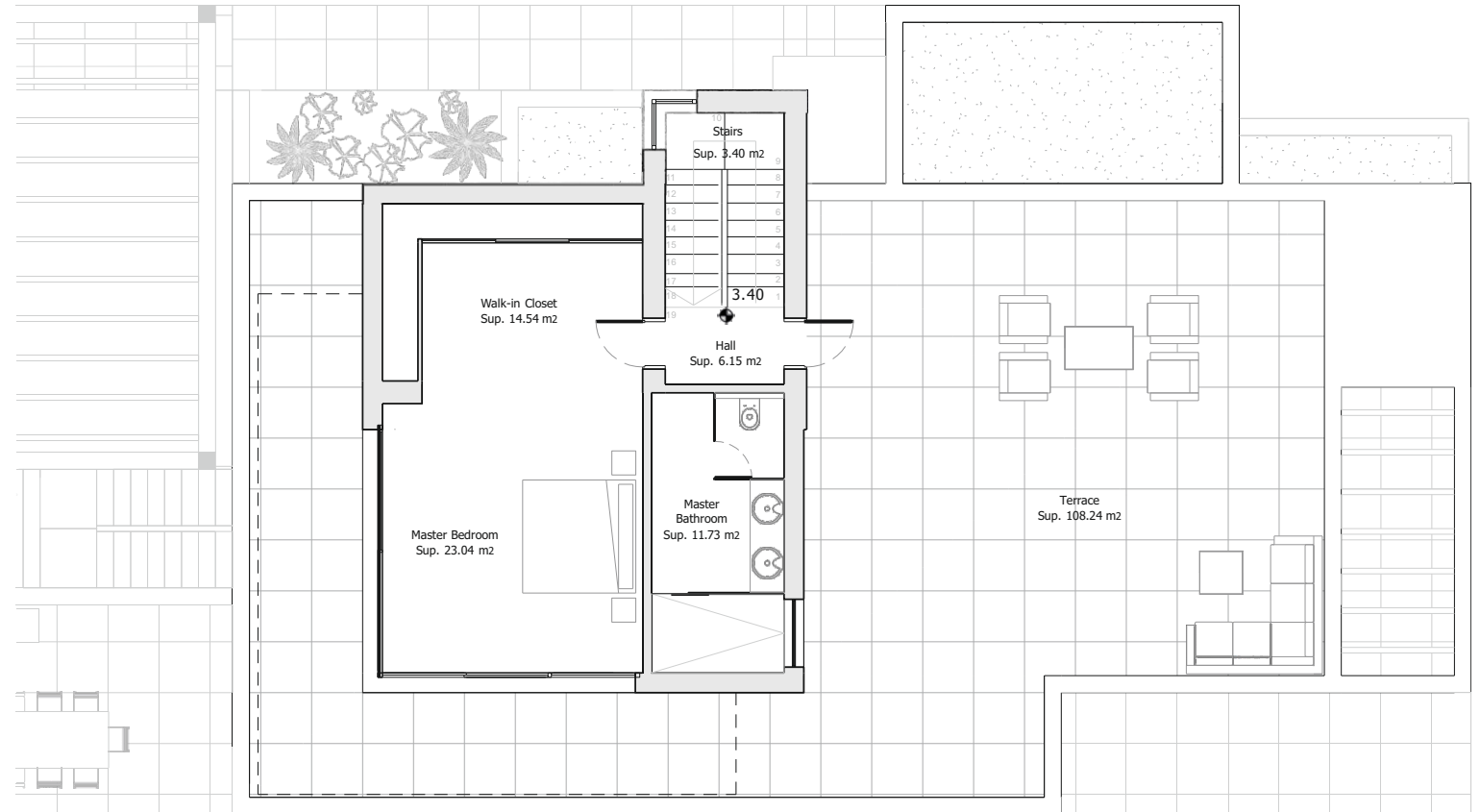
VILLA 2
FIRST FLOOR

METRES

Solarium	108,24m ²
Useful	58,86 m ²
Built	71,77 m ²

Architect
Serrano Font

Developer
Obras y Servicios Vialti



During the development of the project, the Management reserves the right to make the necessary changes, due to legal, administrative, technical, commercial or supply requirements, in distributions, dimensions and surfaces. In no case these changes will imply a modification of the stipulated purchase price. The furniture and any decorative elements that appear on the plans are simply a recreation for orientative and non-binding purposes, in no case are they included in the purchase price of the villa.



ROMANO GOLF VILLAS
LUXURY HOME

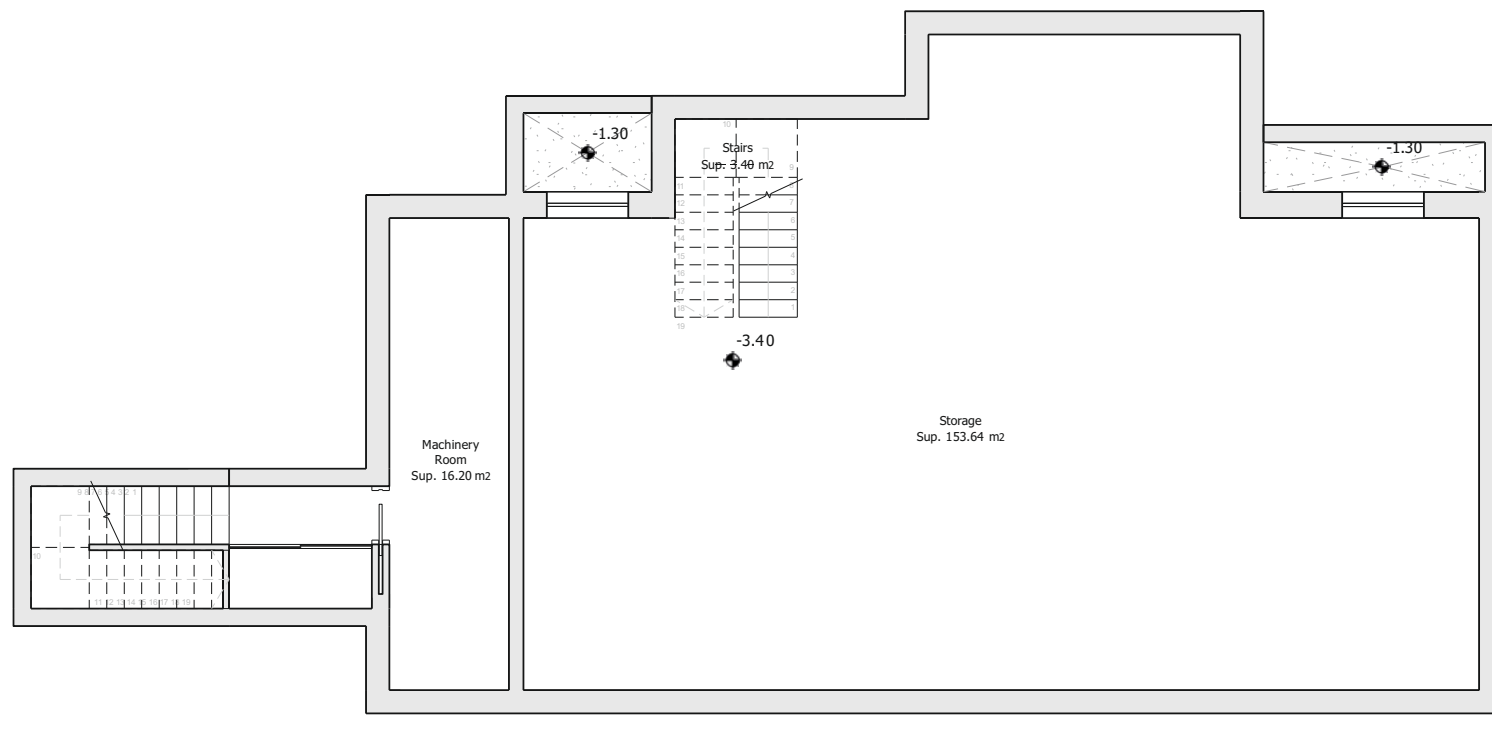
VILLA 2
BASEMENT

METRES

Useful _____ **173,24 m²**
Built _____ **206,97 m²**

—
Architect
Serrano Font

Developer
Obras y Servicios Vialti



During the development of the project, the Management reserves the right to make the necessary changes, due to legal, administrative, technical, commercial or supply requirements, in distributions, dimensions and surfaces. In no case these changes will imply a modification of the stipulated purchase price. The furniture and any decorative elements that appear on the plans are simply a recreation for orientative and non-binding purposes, in no case are they included in the purchase price of the villa.



ROMANO GOLF VILLAS
LUXURY HOME

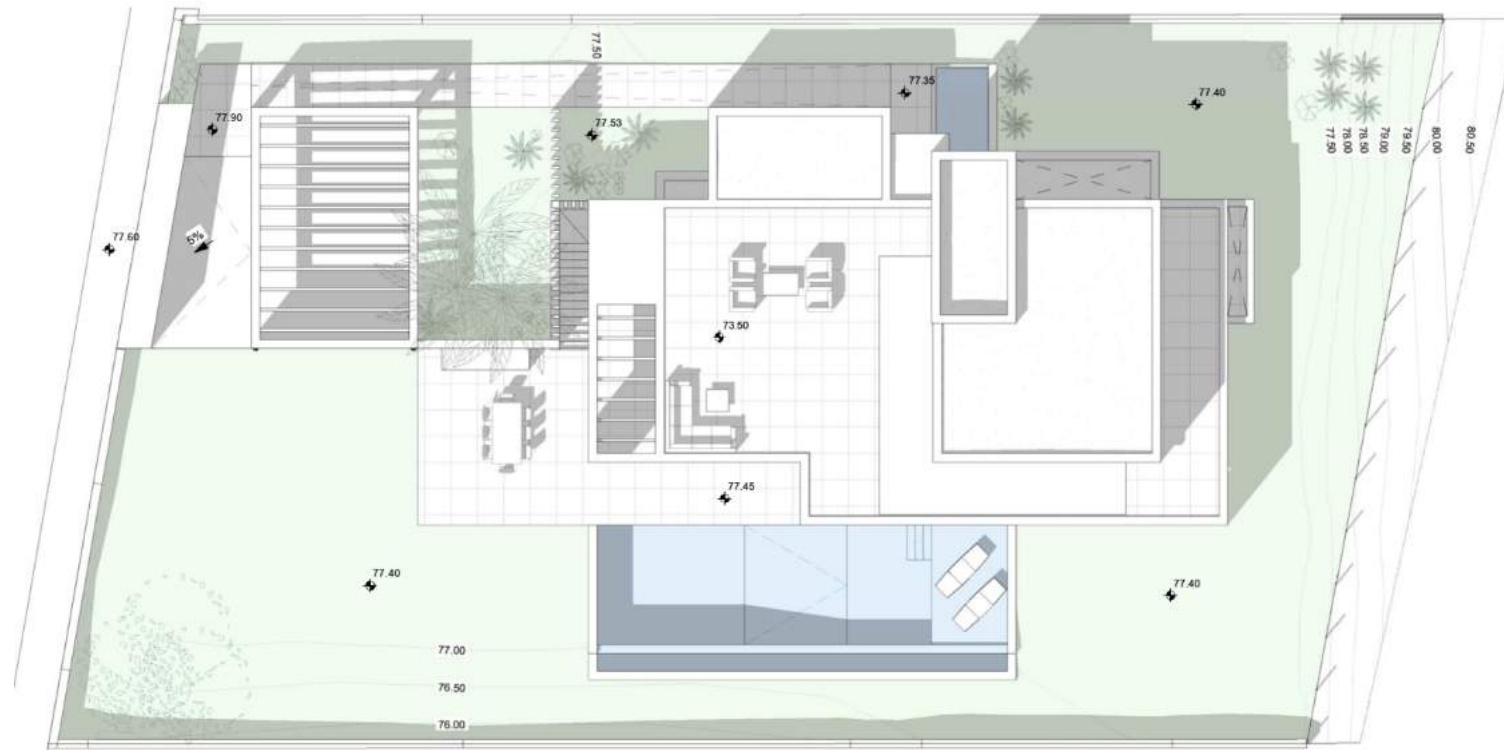
VILLA 3
GENERAL VIEW

METRES

Plot	1.080,87 m ²
Parking	45,15 m ²
Pool	57,61 m ²
Dwelling	435,44 m ²

Architect
Serrano Font

Developer
Obras y Servicios Vialti



During the development of the project, the Management reserves the right to make the necessary changes, due to legal, administrative, technical, commercial or supply requirements, in distributions, dimensions and surfaces. In no case these changes will imply a modification of the stipulated purchase price. The furniture and any decorative elements that appear on the plans are simply a recreation for orientative and non-binding purposes, in no case are they included in the purchase price of the villa.



ROMANO GOLF VILLAS
LUXURY HOME

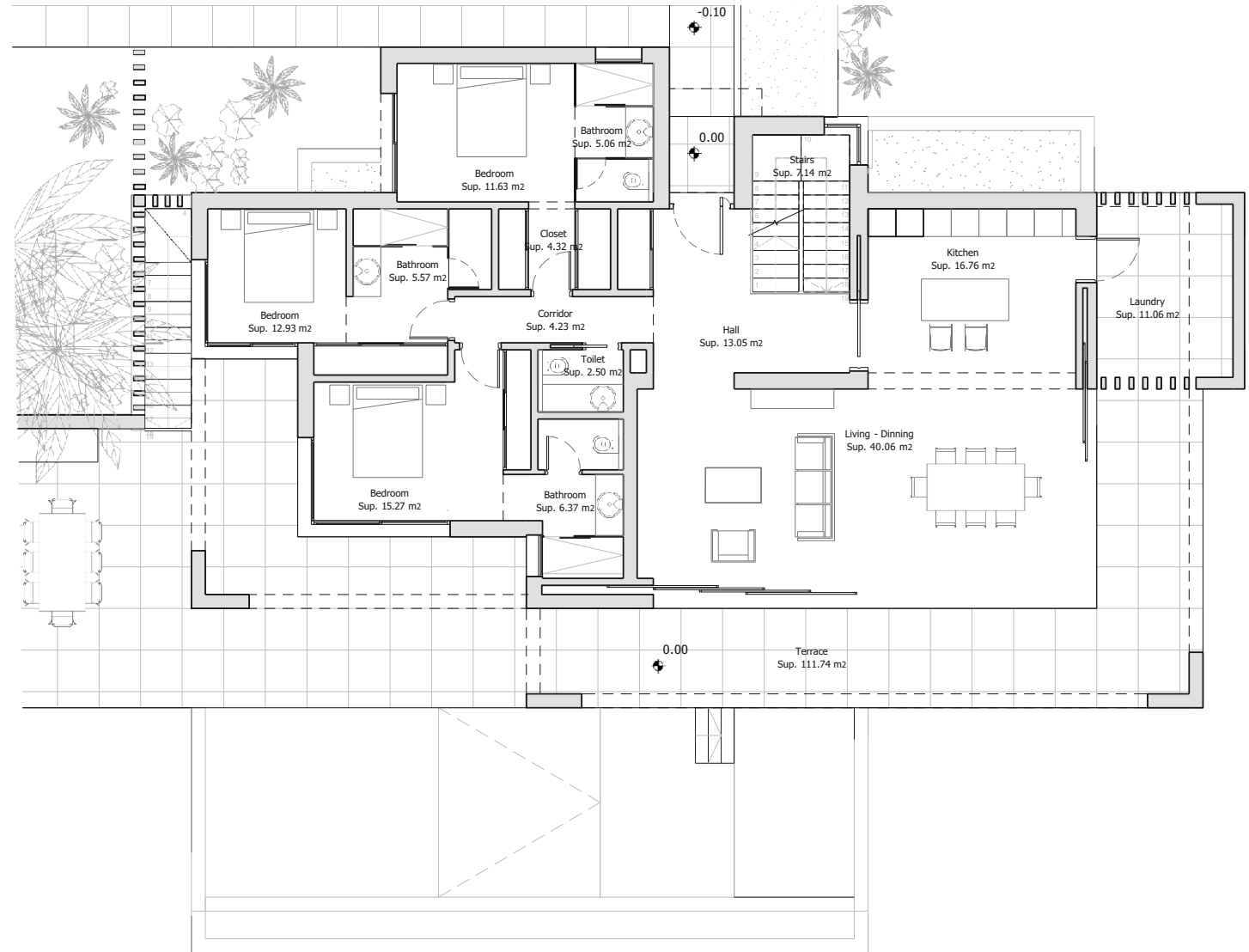
VILLA 3
GROUND FLOOR

METRES

Terrace	111,74 m ²
Useful	155,95 m ²
Built	177,33 m ²

Architect
Serrano Font

Developer
Obras y Servicios Vialti



During the development of the project, the Management reserves the right to make the necessary changes, due to legal, administrative, technical, commercial or supply requirements, in distributions, dimensions and surfaces. In no case these changes will imply a modification of the stipulated purchase price. The furniture and any decorative elements that appear on the plans are simply a recreation for orientative and non-binding purposes, in no case are they included in the purchase price of the villa.



ROMANO GOLF VILLAS
LUXURY HOME

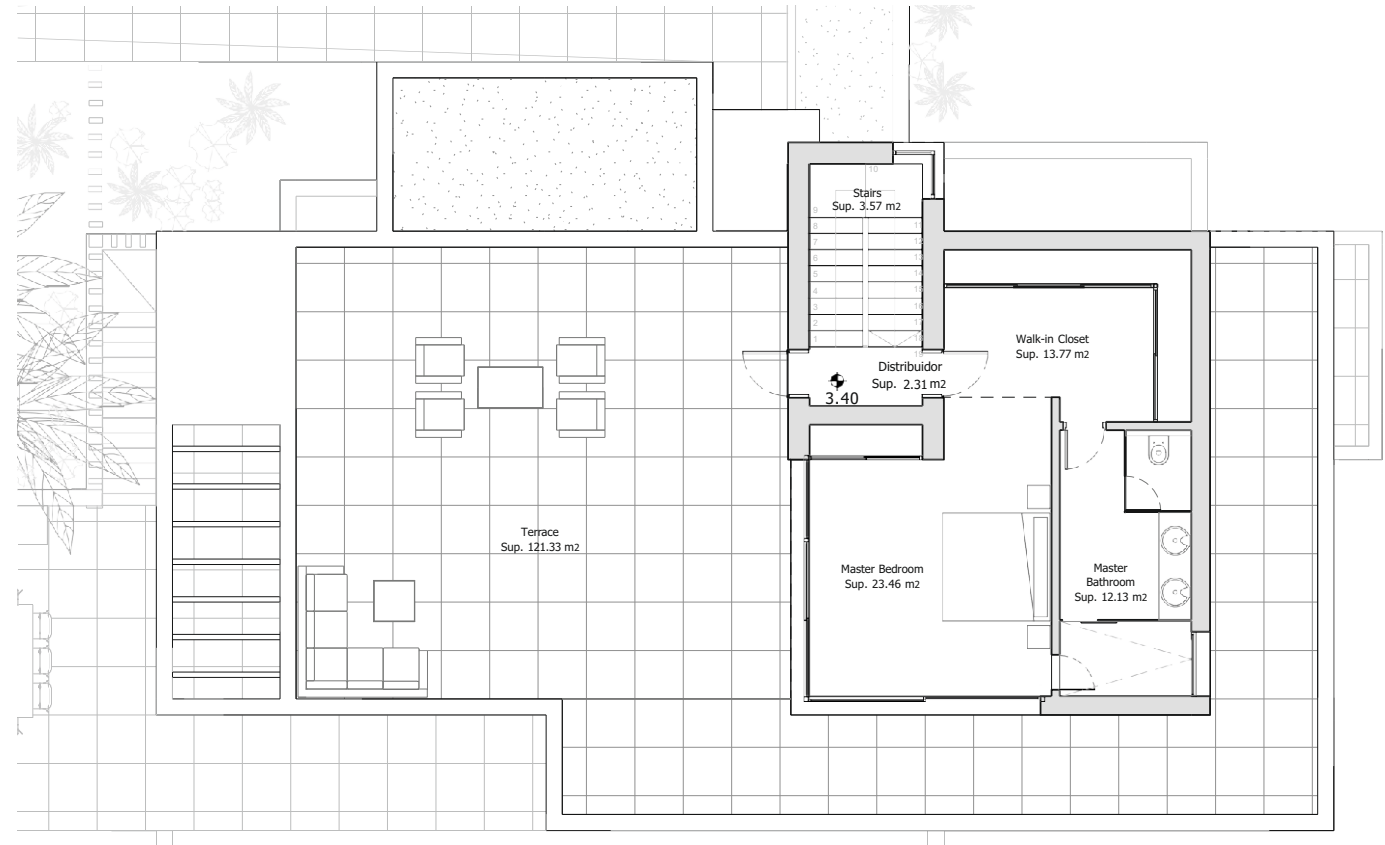
VILLA 3 FIRST FLOOR

METRES

Solarium	_____	121,33 m²
Useful	_____	55,24 m²
Built	_____	71,75 m²

Architect
Serrano Font

Developer
Obras y Servicios Vialti



During the development of the project, the Management reserves the right to make the necessary changes, due to legal, administrative, technical, commercial or supply requirements, in distributions, dimensions and surfaces. In no case these changes will imply a modification of the stipulated purchase price. The furniture and any decorative elements that appear on the plans are simply a recreation for orientative and non-binding purposes, in no case are they included in the purchase price of the villa.



ROMANO GOLF VILLAS
LUXURY HOME

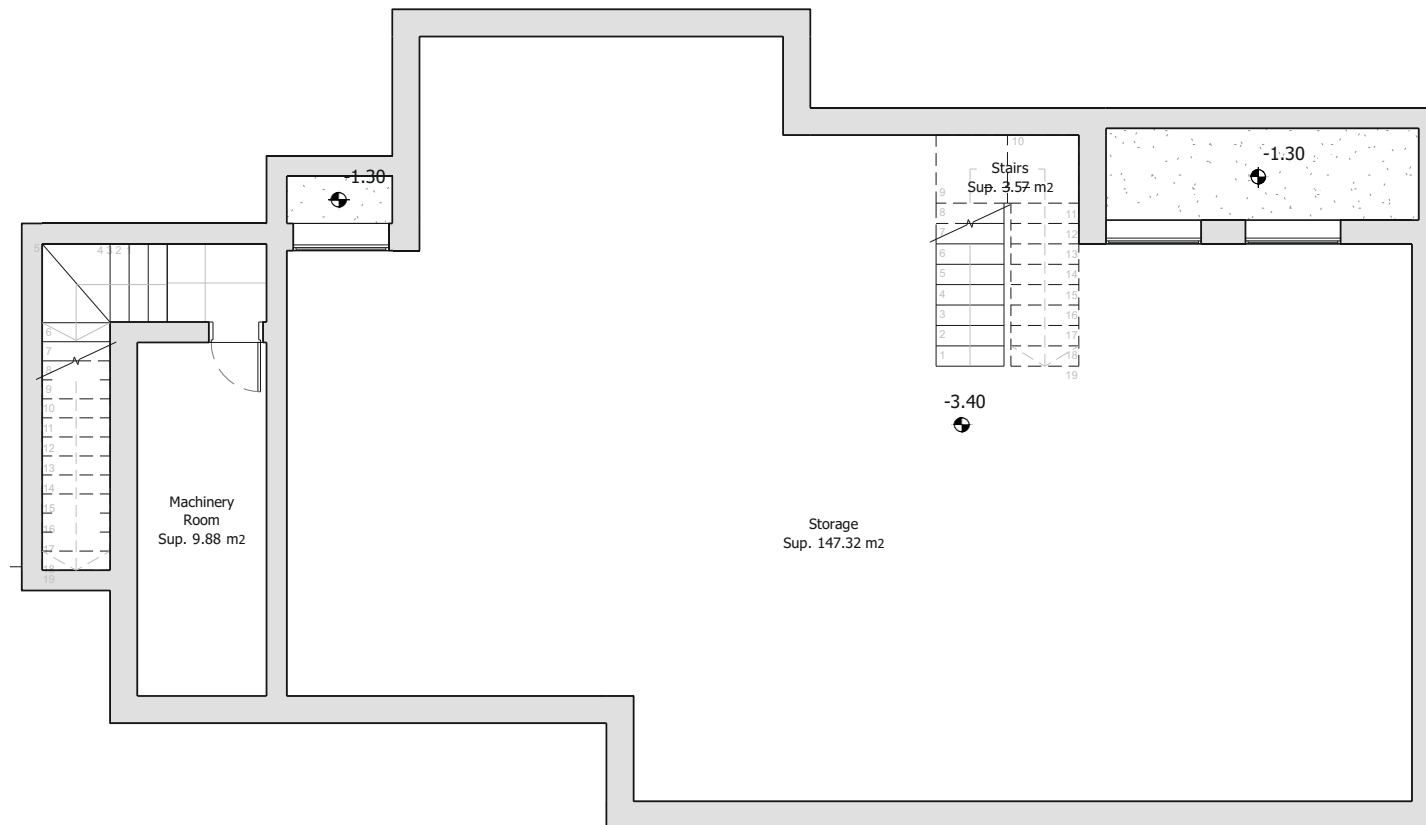
VILLA 3 BASEMENT

METRES

Useful 160,77 m²
Built 286,36 m²

Architect
Serrano Font

Developer
Obras y Servicios Vialti



During the development of the project, the Management reserves the right to make the necessary changes, due to legal, administrative, technical, commercial or supply requirements, in distributions, dimensions and surfaces. In no case these changes will imply a modification of the stipulated purchase price. The furniture and any decorative elements that appear on the plans are simply a recreation for orientative and non-binding purposes, in no case are they included in the purchase price of the villa.



ROMANO GOLF VILLAS
LUXURY HOME

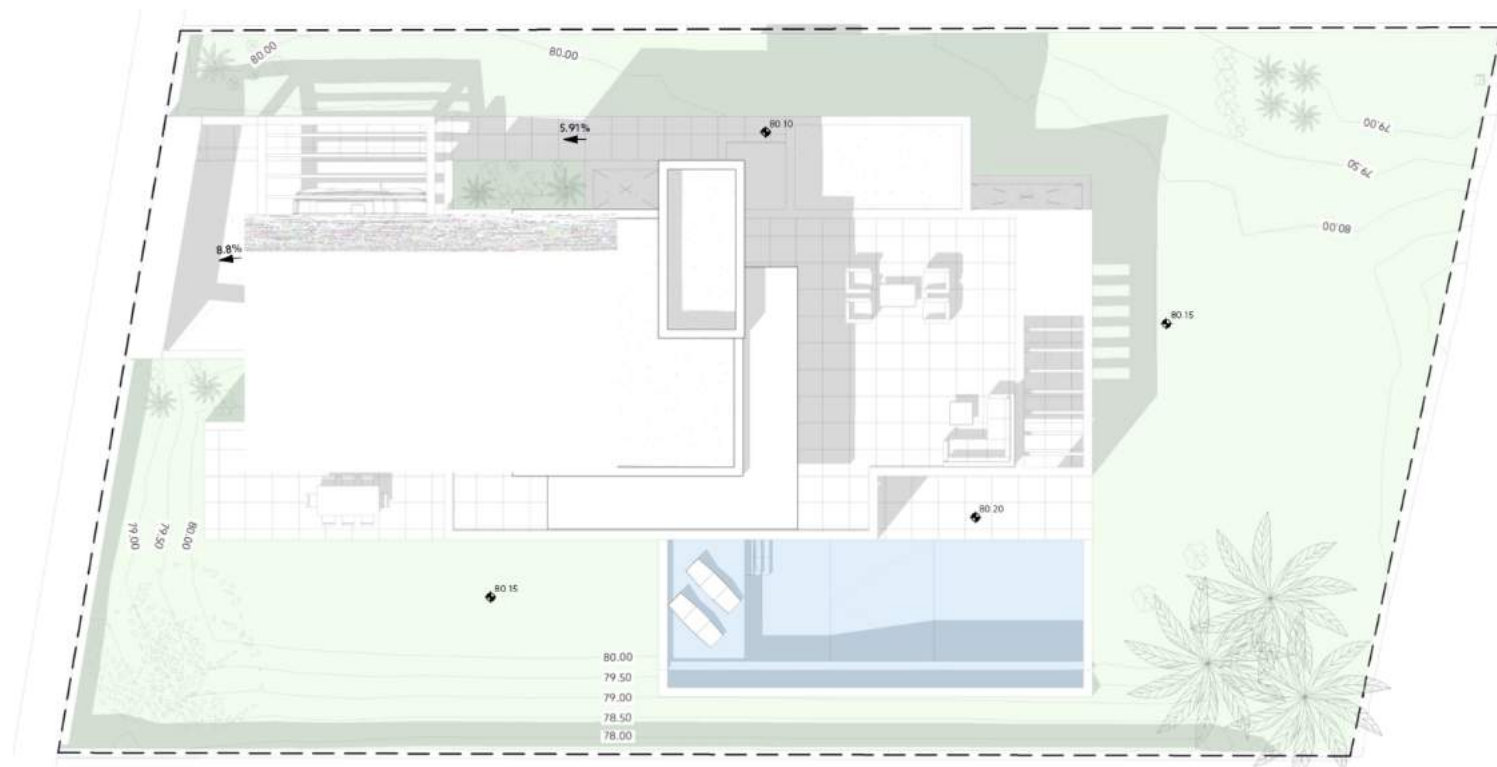
VILLA 4 GENERAL VIEW

METRES

Plot	1080,87 m ²
Parking	42,03 m ²
Pool	57,61 m ²
Dwelling	453,18 m ²

Architect
Serrano Font

Developer
Obras y Servicios Vialti



During the development of the project, the Management reserves the right to make the necessary changes, due to legal, administrative, technical, commercial or supply requirements, in distributions, dimensions and surfaces. In no case these changes will imply a modification of the stipulated purchase price. The furniture and any decorative elements that appear on the plans are simply a recreation for orientative and non-binding purposes, in no case are they included in the purchase price of the villa.



ROMANO GOLF VILLAS
LUXURY HOME

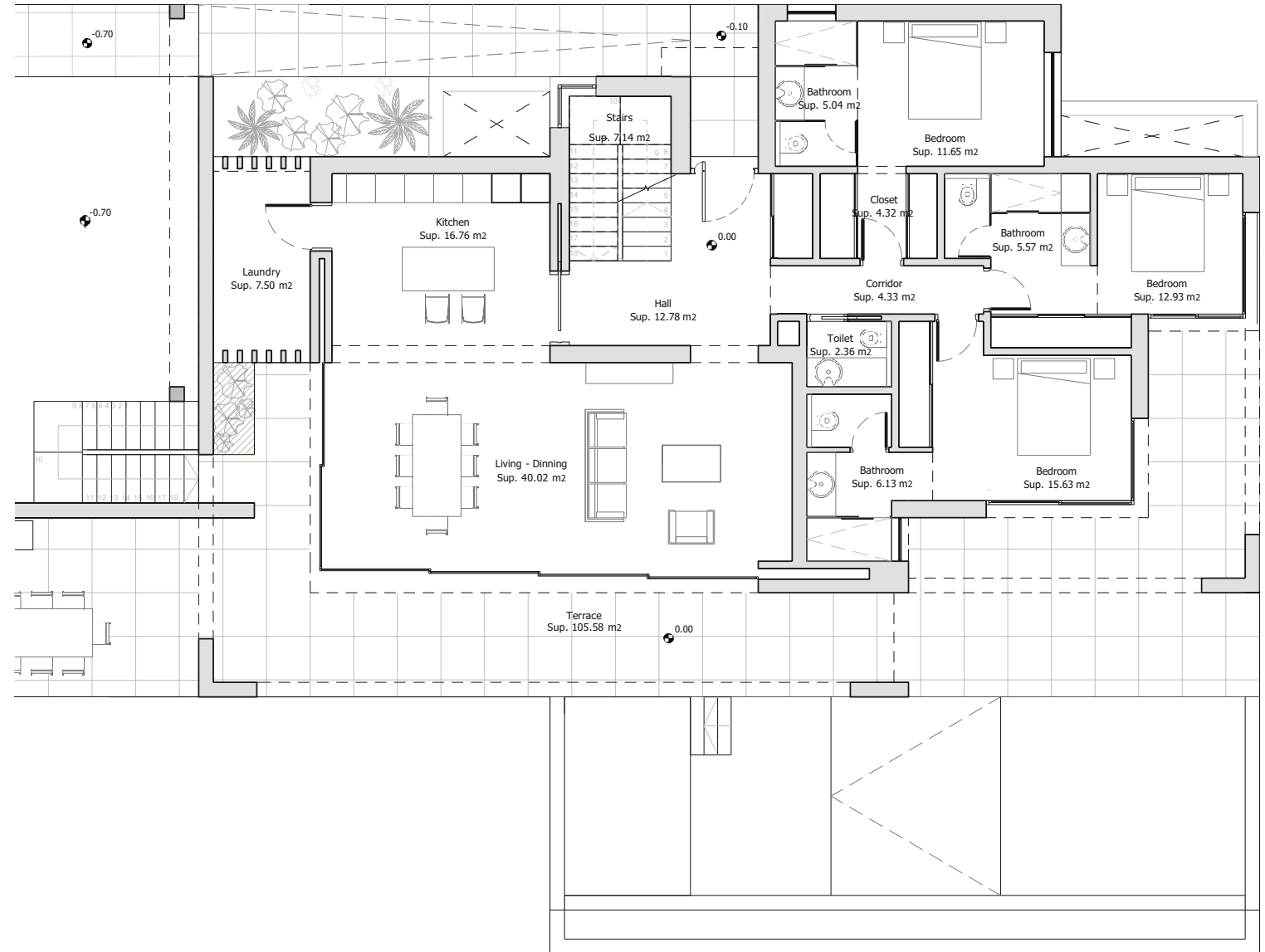
VILLA 4
GROUND FLOOR

METRES

Terrace	————	105,58 m²
Useful	————	152,16m²
Built	————	177,33 m²

Architect
Serrano Font

Developer
Obras y Servicios Vialti



During the development of the project, the Management reserves the right to make the necessary changes, due to legal, administrative, technical, commercial or supply requirements, in distributions, dimensions and surfaces. In no case these changes will imply a modification of the stipulated purchase price. The furniture and any decorative elements that appear on the plans are simply a recreation for orientative and non-binding purposes, in no case are they included in the purchase price of the villa.



ROMANO GOLF VILLAS
LUXURY HOME

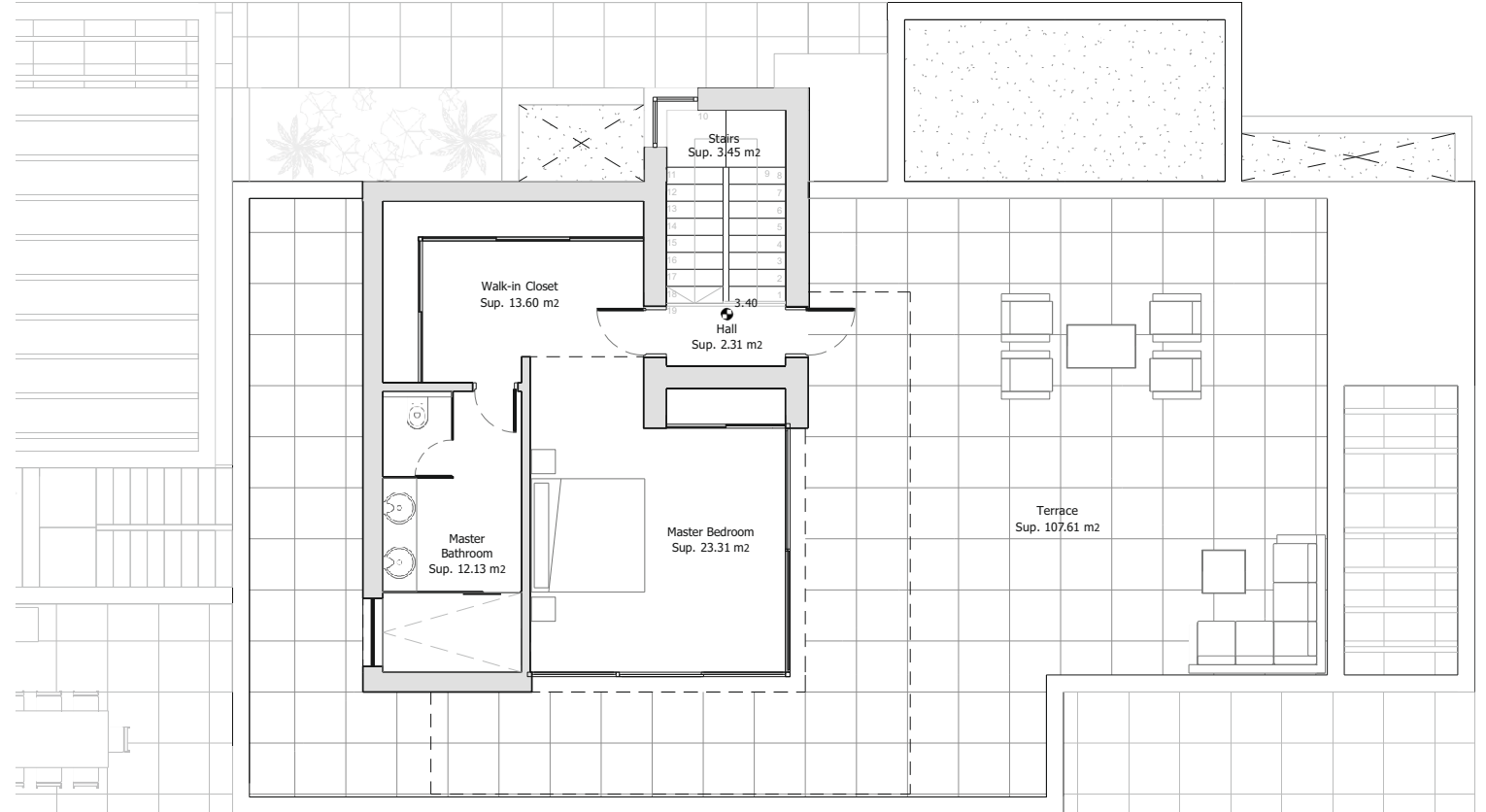
VILLA 4
FIRST FLOOR

METRES

Solarium	107,61 m ²
Useful	54,80 m ²
Built	71,75 m ²

Architect
Serrano Font

Developer
Obras y Servicios Vialti



During the development of the project, the Management reserves the right to make the necessary changes, due to legal, administrative, technical, commercial or supply requirements, in distributions, dimensions and surfaces. In no case these changes will imply a modification of the stipulated purchase price. The furniture and any decorative elements that appear on the plans are simply a recreation for orientative and non-binding purposes, in no case are they included in the purchase price of the villa.



ROMANO GOLF VILLAS
LUXURY HOME

VILLA 4 BASEMENT

METRES

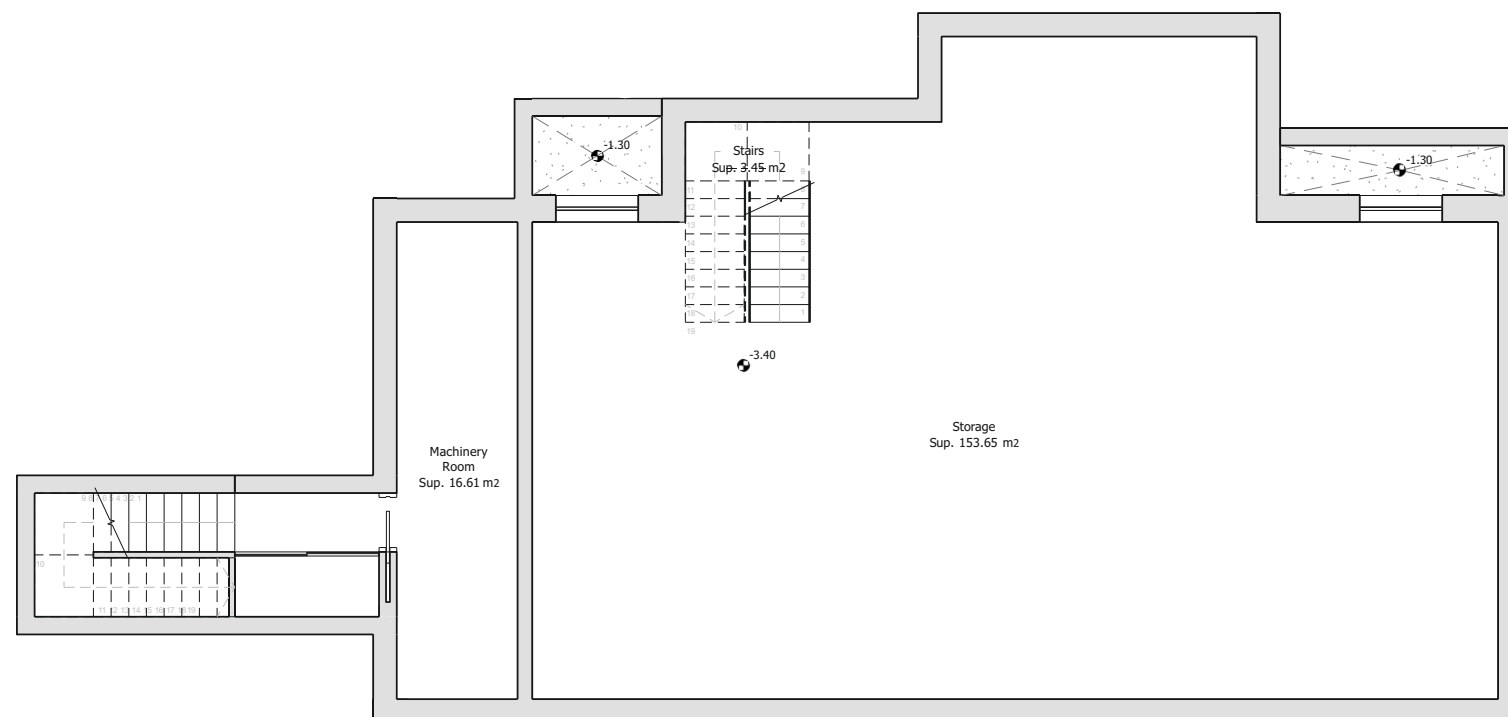
Useful

 173,71 m²
Built

 204,09 m²

Architect
Serrano Font

Developer
Obras y Servicios Vialti



During the development of the project, the Management reserves the right to make the necessary changes, due to legal, administrative, technical, commercial or supply requirements, in distributions, dimensions and surfaces. In no case these changes will imply a modification of the stipulated purchase price. The furniture and any decorative elements that appear on the plans are simply a recreation for orientative and non-binding purposes, in no case are they included in the purchase price of the villa.



ROMANO GOLF VILLAS
LUXURY HOME

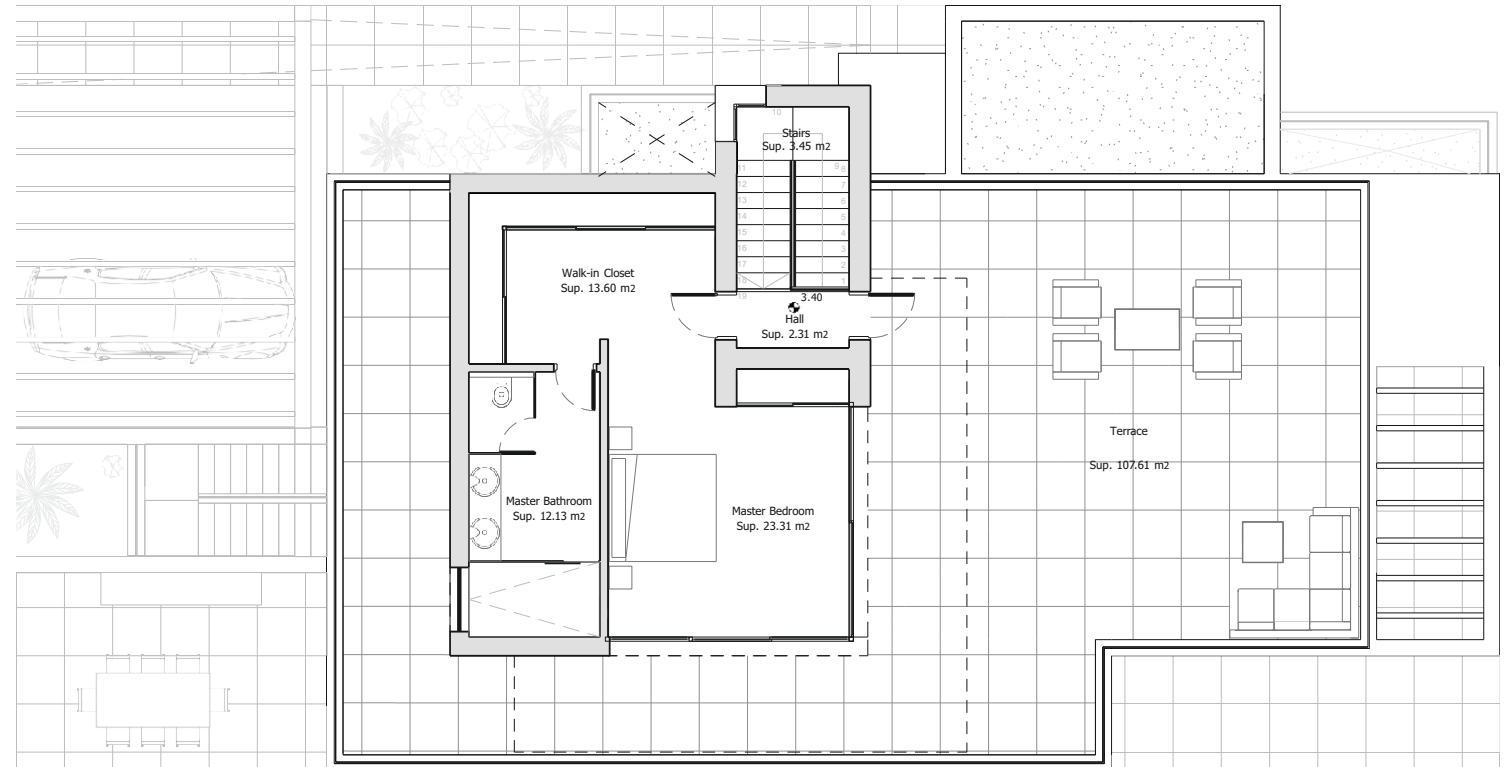
VILLA 6 FIRST FLOOR

METRES

Solarium	107,61 m ²
Useful	54,80 m ²
Built	71,75 m ²

Architect
Serrano Font

Developer
Obras y Servicios Vialti



During the development of the project, the Management reserves the right to make the necessary changes, due to legal, administrative, technical, commercial or supply requirements, in distributions, dimensions and surfaces. In no case these changes will imply a modification of the stipulated purchase price. The furniture and any decorative elements that appear on the plans are simply a recreation for orientative and non-binding purposes, in no case are they included in the purchase price of the villa.



ROMANO GOLF VILLAS
LUXURY HOME

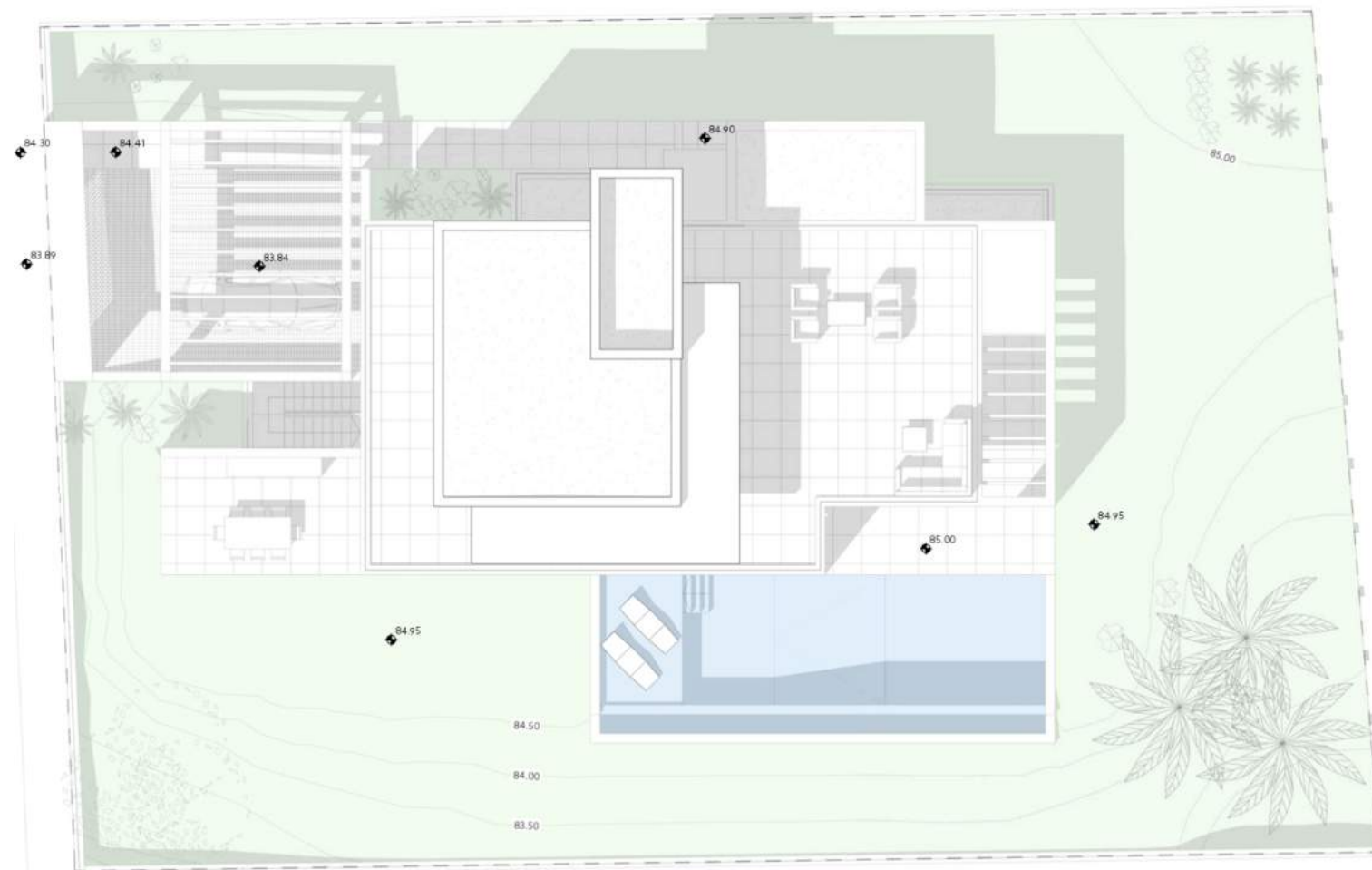
VILLA 6 GENERAL VIEW

METRES

Plot	_____	1079,34 m ²
Parking	_____	42,03 m ²
Pool	_____	57,61 m ²
Dwelling	_____	452,69 m ²

Architect
Serrano Font

Developer
Obras y Servicios Vialti



During the development of the project, the Management reserves the right to make the necessary changes, due to legal, administrative, technical, commercial or supply requirements, in distributions, dimensions and surfaces. In no case these changes will imply a modification of the stipulated purchase price. The furniture and any decorative elements that appear on the plans are simply a recreation for orientative and non-binding purposes, in no case are they included in the purchase price of the villa.



ROMANO GOLF VILLAS
LUXURY HOME

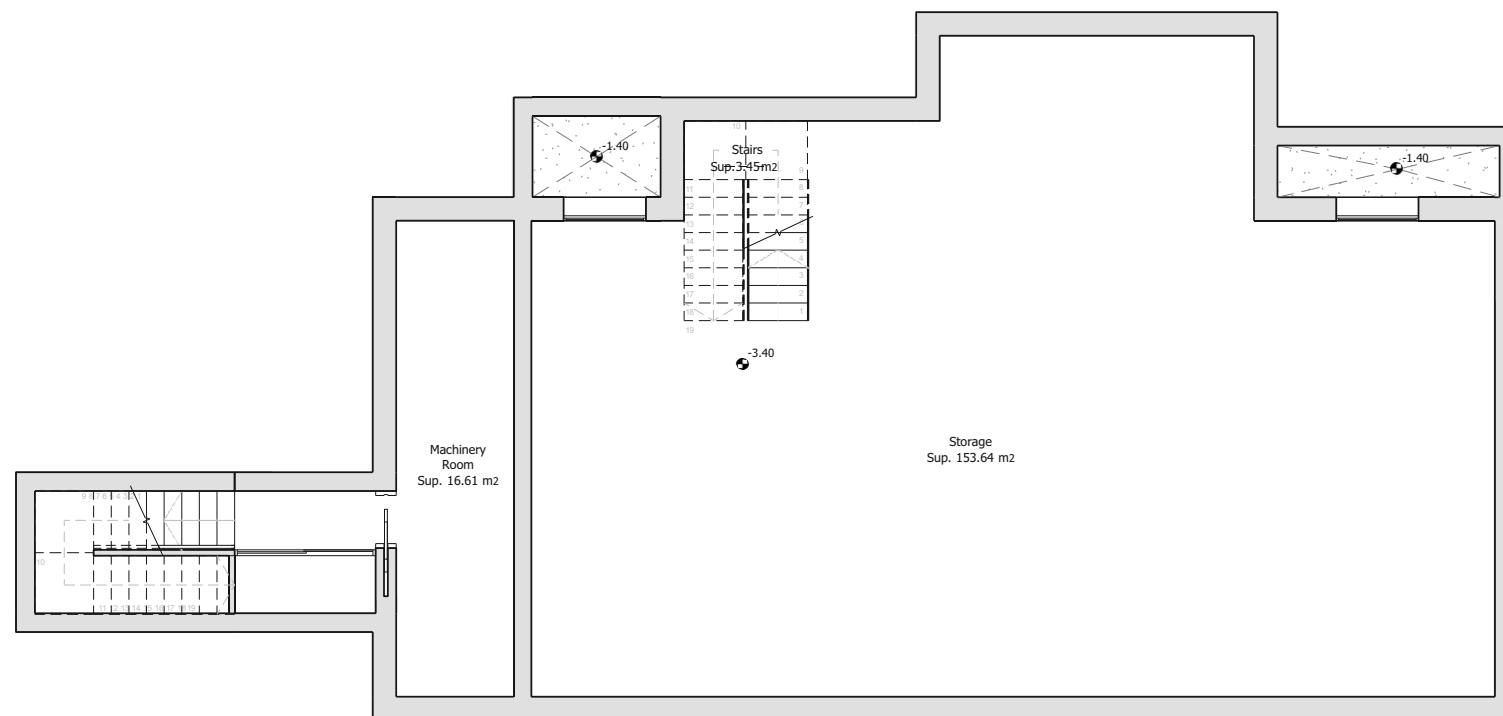
VILLA 6 BASEMENT

METRES

Useful _____ 173,70 m²
Built _____ 204,09 m²

Architect
Serrano Font

Developer
Obras y Servicios Vialti



During the development of the project, the Management reserves the right to make the necessary changes, due to legal, administrative, technical, commercial or supply requirements, in distributions, dimensions and surfaces. In no case these changes will imply a modification of the stipulated purchase price. The furniture and any decorative elements that appear on the plans are simply a recreation for orientative and non-binding purposes, in no case are they included in the purchase price of the villa.



ROMANO GOLF VILLAS
LUXURY HOME

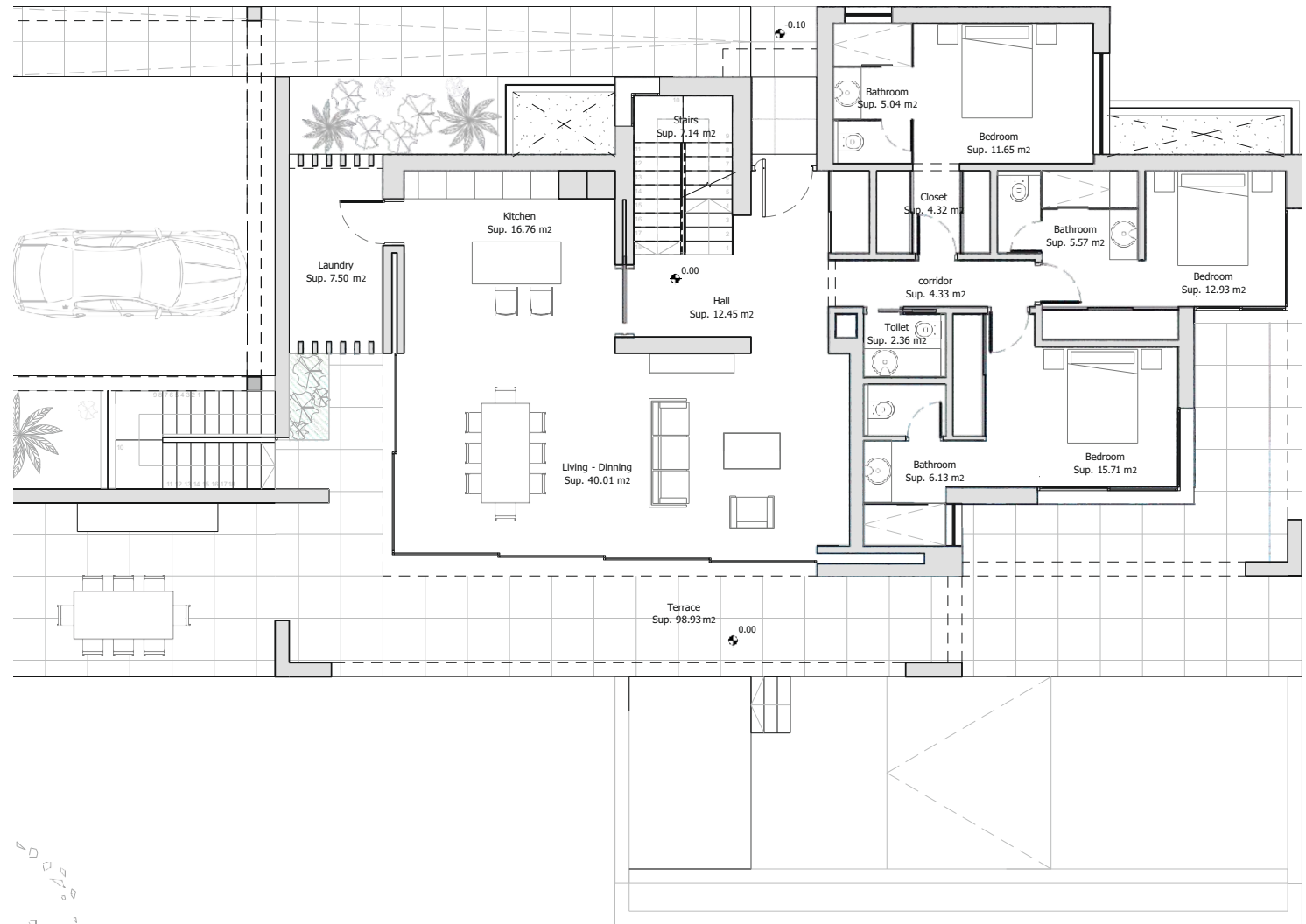
VILLA 6
GROUND FLOOR

METRES

Terrace	98,93 m ²
Useful	151,90m ²
Built	177,33 m ²

Architect
Serrano Font

Developer
Obras y Servicios Vialti



During the development of the project, the Management reserves the right to make the necessary changes, due to legal, administrative, technical, commercial or supply requirements, in distributions, dimensions and surfaces. In no case these changes will imply a modification of the stipulated purchase price. The furniture and any decorative elements that appear on the plans are simply a recreation for orientative and non-binding purposes, in no case are they included in the purchase price of the villa.



ROMANO GOLF VILLAS
LUXURY HOME

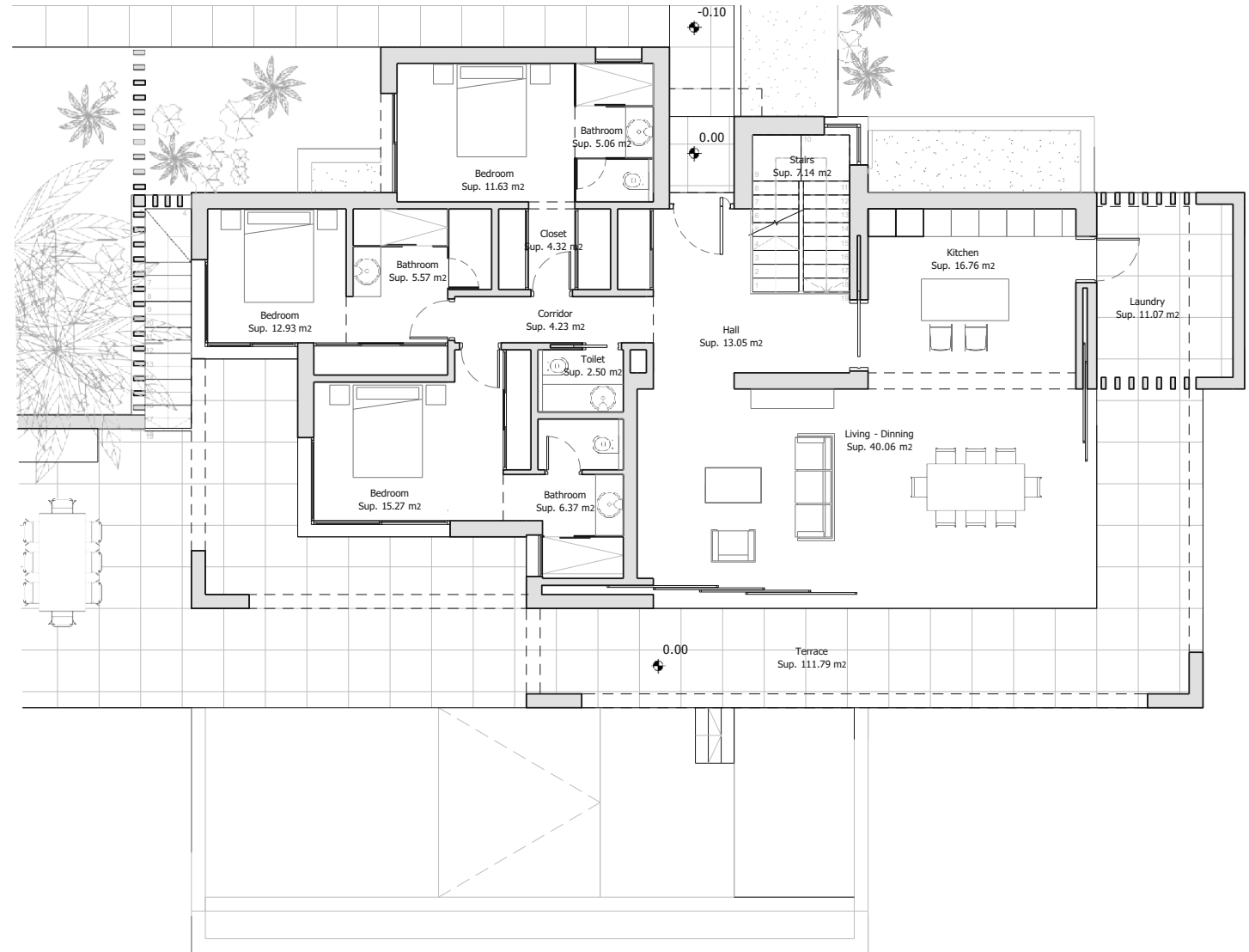
VILLA 7
GROUND FLOOR

METRES

Terrace	111,79 m ²
Useful	155,96 m ²
Built	177,35 m ²

Architect
Serrano Font

Developer
Obras y Servicios Vialti



During the development of the project, the Management reserves the right to make the necessary changes, due to legal, administrative, technical, commercial or supply requirements, in distributions, dimensions and surfaces. In no case these changes will imply a modification of the stipulated purchase price. The furniture and any decorative elements that appear on the plans are simply a recreation for orientative and non-binding purposes, in no case are they included in the purchase price of the villa.



ROMANO GOLF VILLAS
LUXURY HOME

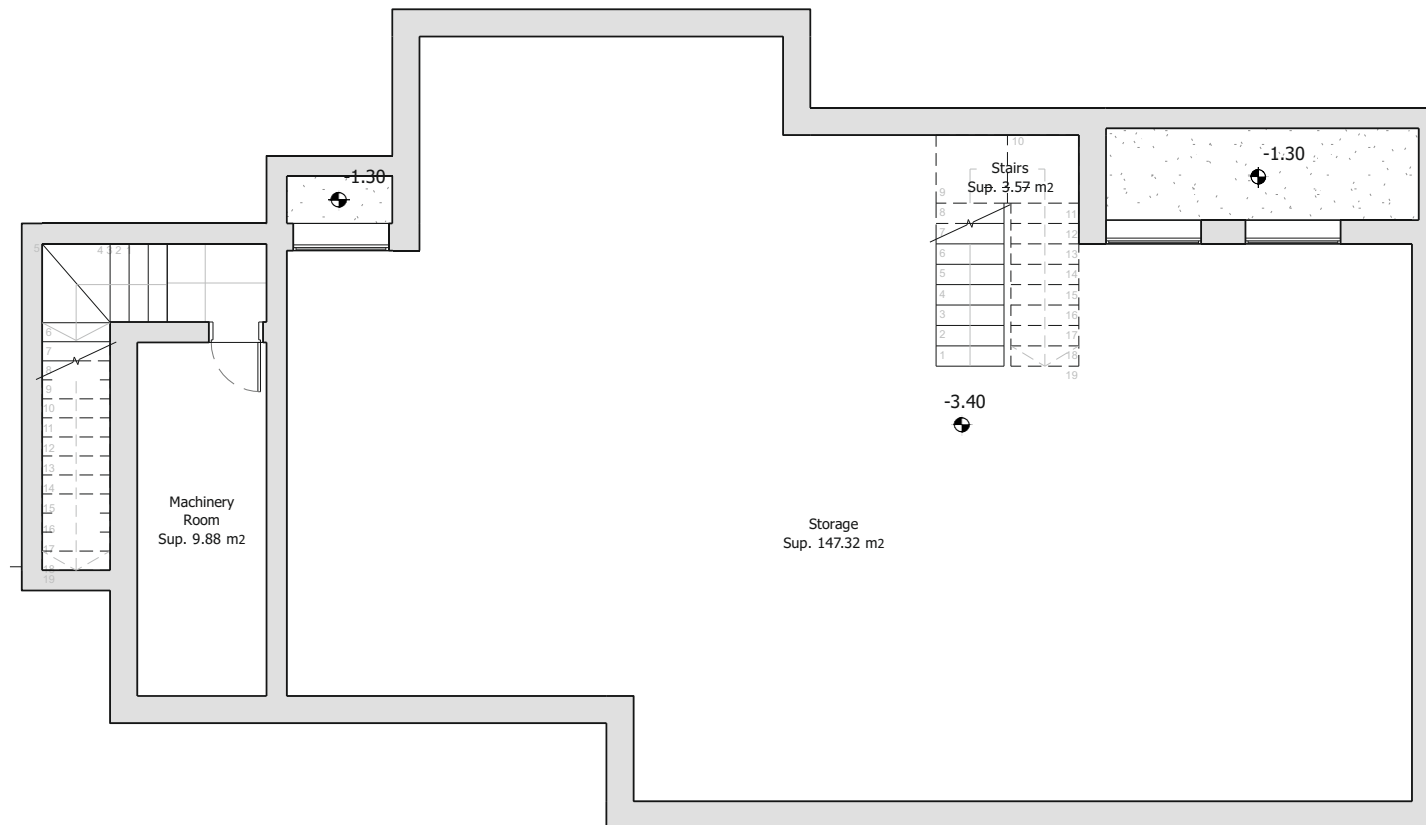
VILLA 7 BASEMENT

METRES

Useful 160,77 m²
Built 186,36 m²

Architect
Serrano Font

Developer
Obras y Servicios Vialti



During the development of the project, the Management reserves the right to make the necessary changes, due to legal, administrative, technical, commercial or supply requirements, in distributions, dimensions and surfaces. In no case these changes will imply a modification of the stipulated purchase price. The furniture and any decorative elements that appear on the plans are simply a recreation for orientative and non-binding purposes, in no case are they included in the purchase price of the villa.



ROMANO GOLF VILLAS
LUXURY HOME

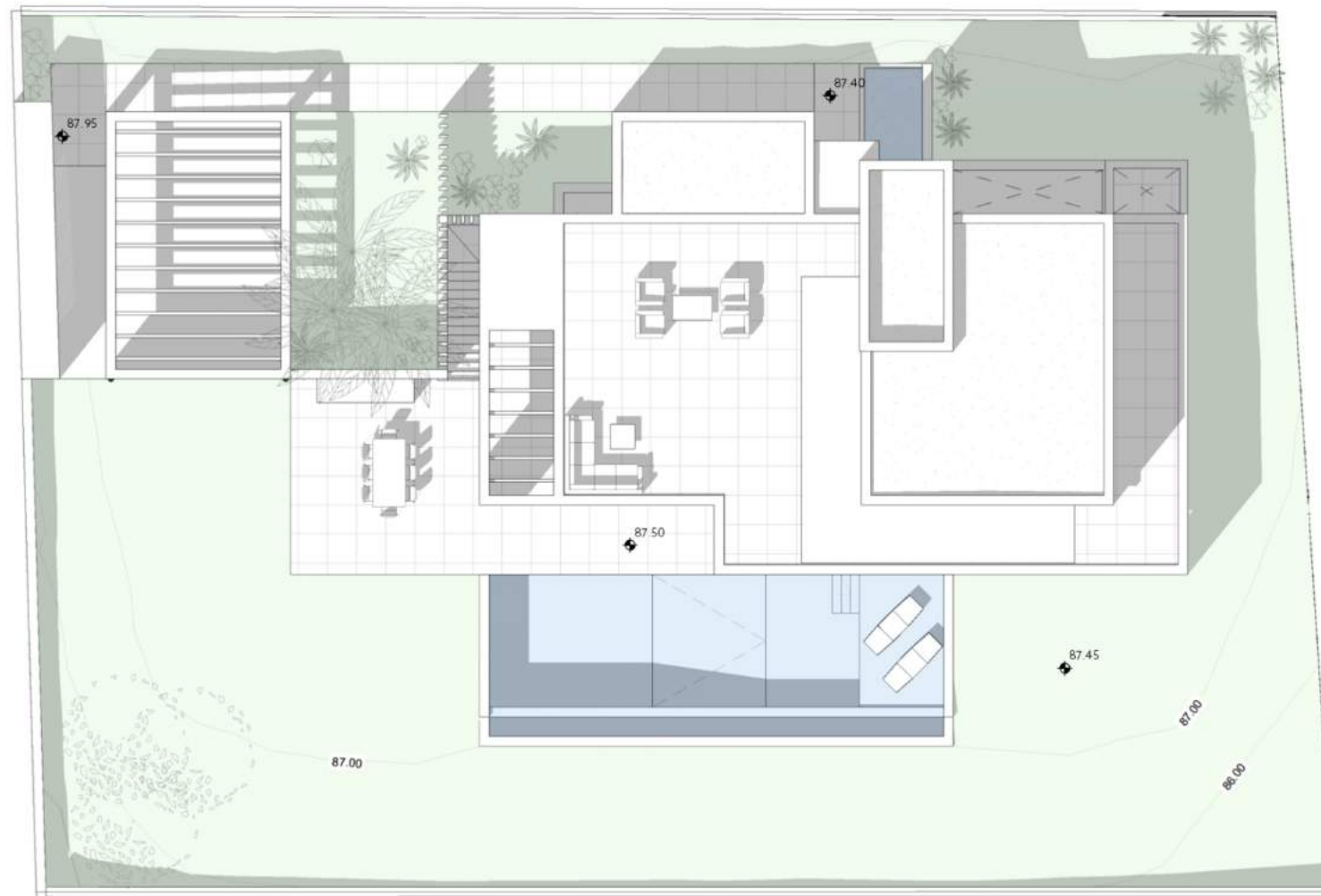
VILLA 7
GENERAL VIEW

METRES

Plot	1.079,15 m ²
Parking	45,15 m ²
Pool	57,61 m ²
Dwelling	435,46 m ²

Architect
Serrano Font

Developer
Obras y Servicios Vialti



During the development of the project, the Management reserves the right to make the necessary changes, due to legal, administrative, technical, commercial or supply requirements, in distributions, dimensions and surfaces. In no case these changes will imply a modification of the stipulated purchase price. The furniture and any decorative elements that appear on the plans are simply a recreation for orientative and non-binding purposes, in no case are they included in the purchase price of the villa.



ROMANO GOLF VILLAS
LUXURY HOME

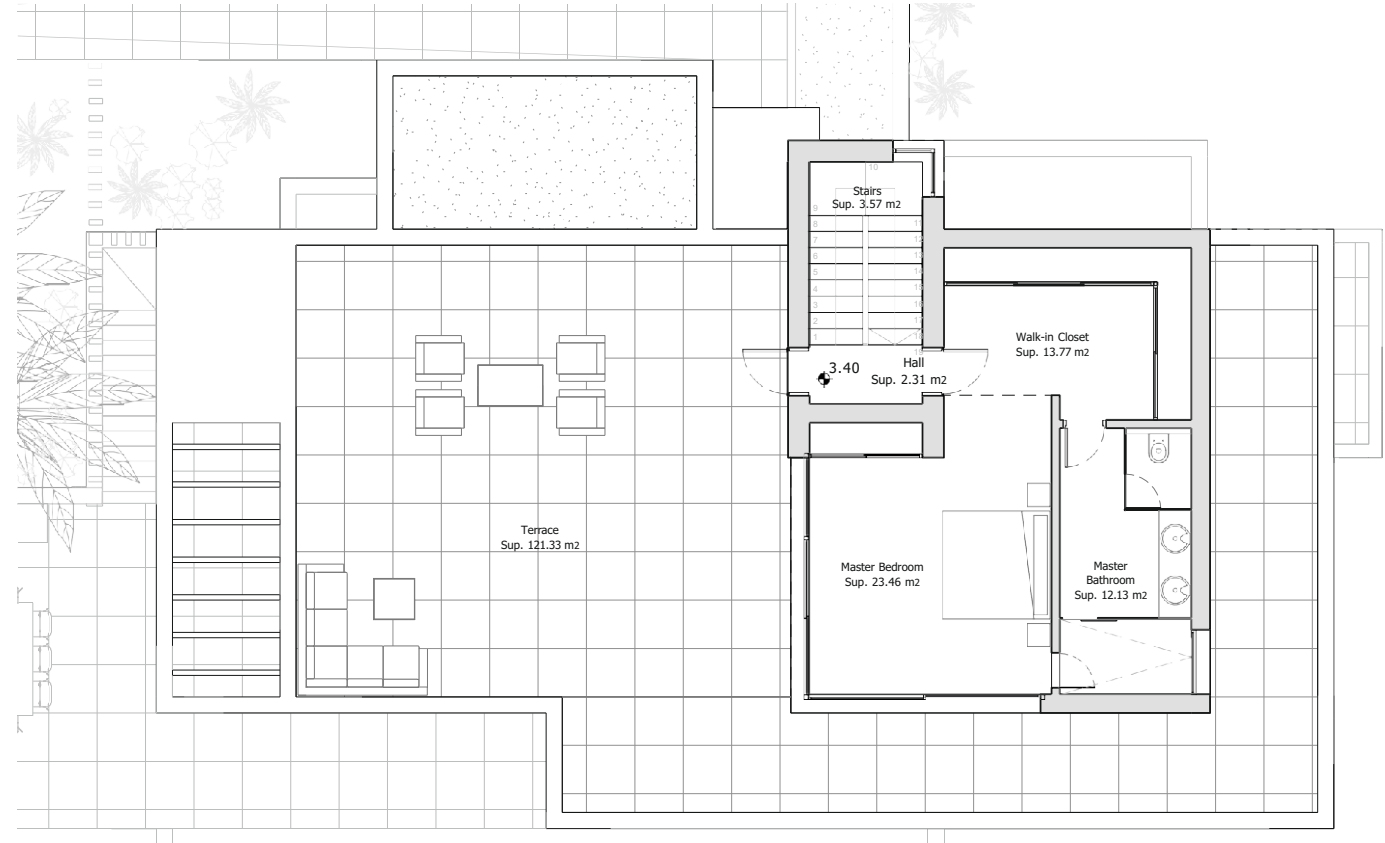
VILLA 7
FIRST FLOOR

METRES

Solarium	_____	121,33 m²
Useful	_____	55,24 m²
Built	_____	71,75 m²

Architect
Serrano Font

Developer
Obras y Servicios Vialti



During the development of the project, the Management reserves the right to make the necessary changes, due to legal, administrative, technical, commercial or supply requirements, in distributions, dimensions and surfaces. In no case these changes will imply a modification of the stipulated purchase price. The furniture and any decorative elements that appear on the plans are simply a recreation for orientative and non-binding purposes, in no case are they included in the purchase price of the villa.